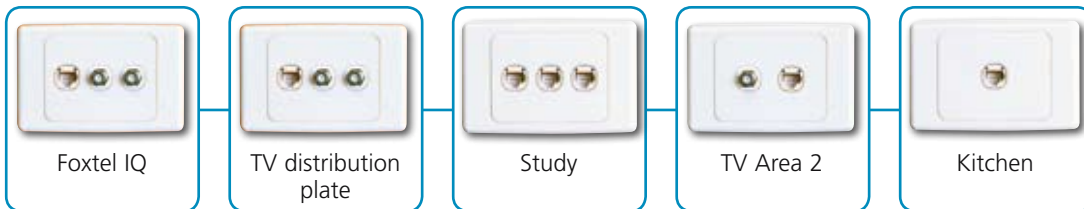




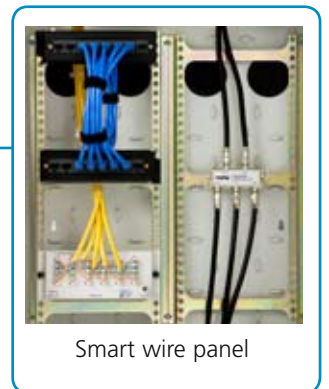
Six questions to ask before you accept a cabling solution for your home

- Is the proposed work industry accredited "smart wiring™", or conventional Phone and TV cabling only?
- Does it include an extended warranty?
- Will the design and installation be done to Telstra Smart Community™ requirements by a Telstra preferred supplier?
- Is your job installed and labelled by a Foxtel recognised installer?
- Will your cabling be installed by an industry recognised specialist, with all appropriate qualifications and a high level of industry experience?
- Will your job be cabled with category 6 cable?

system includes:



Includes standard lead-in services, additional charges will apply for specialised underground lead-in services



26 Walters Dr Osborne Park WA 6017 | Tel 1300 652 633 | www.intelligenthome.com.au

Will the cabling in your new home be obsolete before construction is even finished?

The cost of installing smart wiring is far less than the cost of not installing it...

Every home built today should have smart wiring installed. The amount of hardwired phones and faxes in the home is dropping dramatically. Even more dramatic, is the increase of network devices being released in the market and appearing in the home. A home once had one desktop PC. Now it is common for a home to have multiple PC's and or laptops, network enabled gaming consoles, internet enabled phones (VOIP), network printers and more. Media streaming devices, and media centre PC's are designed to plug into your TV/Theatre and give you access to your digitally stored movies, music and photos. To utilise these types of products, you require a high speed data network integrated with high grade Television cabling to industry recognised standards. Conventional phone cabling or wireless networks can not effectively deal with the amount of high speed applications that are now required in the home.

The Intelligent Home Story

In 2000 an existing electrical contracting business and a high end hi-fi company began a new business venture. Realising that neither company could provide an end to end complete solution for their clients, it was decided to form a new business model that could... and Intelligent Home was born. With over 7000 installs since its inception, Intelligent Home is the most successful business of its type in Australia.

The Intelligent Home Stamp of Quality:

Intelligent Home now introduces its exclusive stamp of quality on its smart wiring designs. This simple stamp on all of our quotes and plans ensures that you receive the following assurances:

- The unique Intelligent Home 20 year parts and labour warranty on its smart wiring solution.
- The design and install is done within the parameters of the Smart Wired House™ certification.
- The design fulfills Foxtel's new design parameters and is Foxtel recognised.
- The installation is done to Telstra Smart Community® guidelines by Western Australia's first Telstra preferred Smart Wiring installer
- That category 6 cable is used exclusively in our designs.

The Intelligent Home Design:

At Intelligent Home we take the time to ask the questions that count. Your lifestyle, technical requirements, future requirements, the services available in your area are all important to design. Our promise is to deliver an end product that will be relevant for you now and in the future. PLEASE NOTE: Even if your builder has included this package in your building contract a design consultation is necessary to ensure the best possible solution.



Something to consider...

- Products like media streamers are now available from multiple manufacturers and different features are available for the discerning end user depending on taste.
- The content is readily available... Google "video on demand" and see how many websites pop up.
- The last remaining impediment for unlimited connectivity in Australia was internet speed. With initiatives like Telstra Smart Community®, internet speed fast enough to raise your pulse is about to open the flood gates.
- Your home will require more network speed than many offices because of the high speed required for media/video streaming.

Are you ready?

Quote is indicative only until the completion of an Intelligent Home "checklist and scope of works" document. Surcharges may apply for out of metro service zone installations and/or construction methods.



26 Walters Dr Osborne Park WA 6017 | Tel 1300 652 633 | www.intelligenthome.com.au

